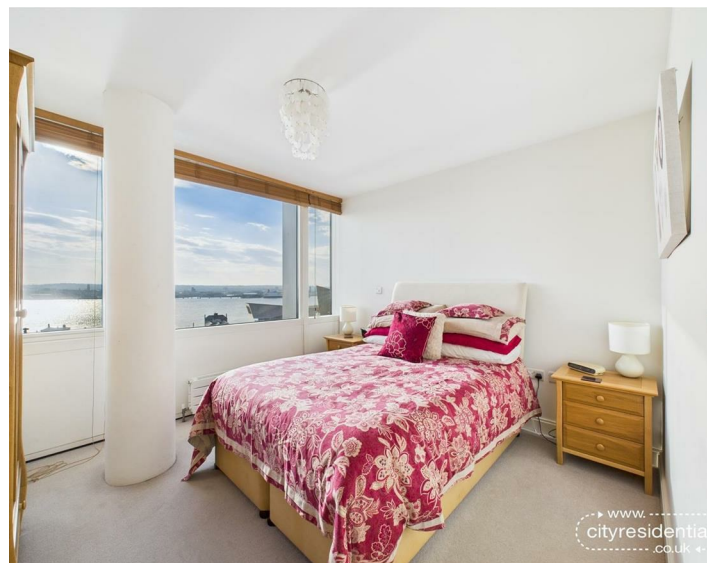




A1205 One Park West, Liverpool, L1 8LP  
Asking Price £165,000 Leasehold

www.  
cityresidential  
.co.uk





About the Property

Your perfect executive home in a pristine location!

This well presented one bedroom apartment is located on the 12th Floor of the ever popular One Park West.

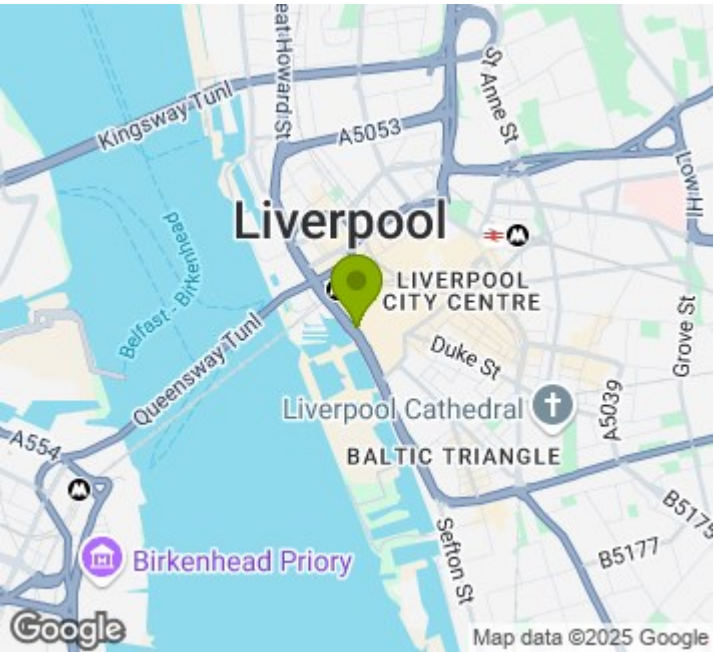
The landmark development which is situated in a prime position in the heart of Liverpool ONE offers close proximity to local restaurants, shops and bars.

The apartment which is attractively presented throughout comprises; entrance hall, open plan living/dining area, fully fitted kitchen, spacious double bedroom and family bathroom. The living area and bedroom both benefit from far reaching views over The Albert Dock and River Mersey.

The apartment also comes complete with a secure, allocated car parking space and benefits from a 24 hour concierge service.

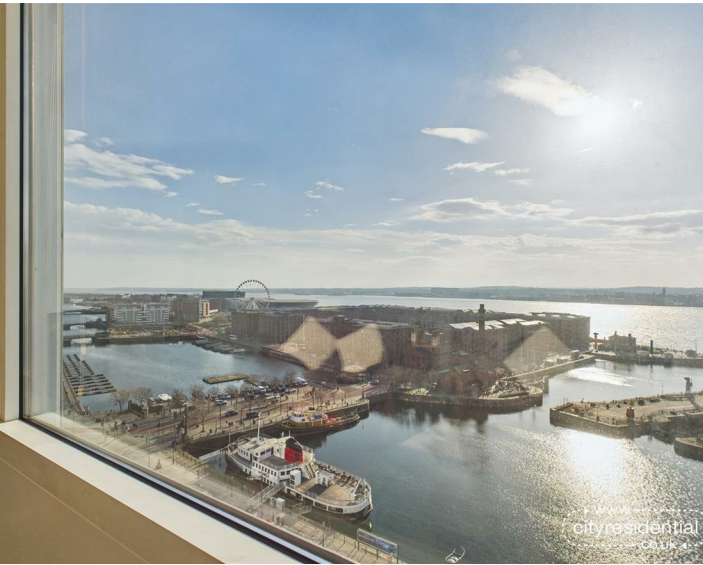
Viewing is highly recommended to appreciate the high specification of this apartment.

- Stylish One Bedroom Apartment
- 12th Floor
- Stunning Views Over The Albert Dock
- 24/7 Concierge Service
- Located In The Heart of Liverpool One
- Secure Allocated Parking



Energy Efficiency Rating

	Current	Potential
Very energy efficient - lower running costs		
(92 plus) <b>A</b>		
(81-91) <b>B</b>		
(69-80) <b>C</b>		
(55-68) <b>D</b>		
(39-54) <b>E</b>		
(21-38) <b>F</b>		
(1-20) <b>G</b>		
Not energy efficient - higher running costs		
<b>England &amp; Wales</b>	EU Directive 2002/91/EC	



City Residential  
81/87 Victoria Street, The Old Haymarket, Liverpool L1 6DG  
T: 0151 231 6100 F: 0151 231 6105  
E: sales@cityresidential.co.uk



WWW.  
cityresidential  
.co.uk